



Business models in the recycling sector

Experiences from GIZ projects

Torsten Lingner

Planning Officer in SWM and Circular Economy

Coordinate • Collaborate • Co-create



Supported by



Co-Funded by the European Union



Implemented by

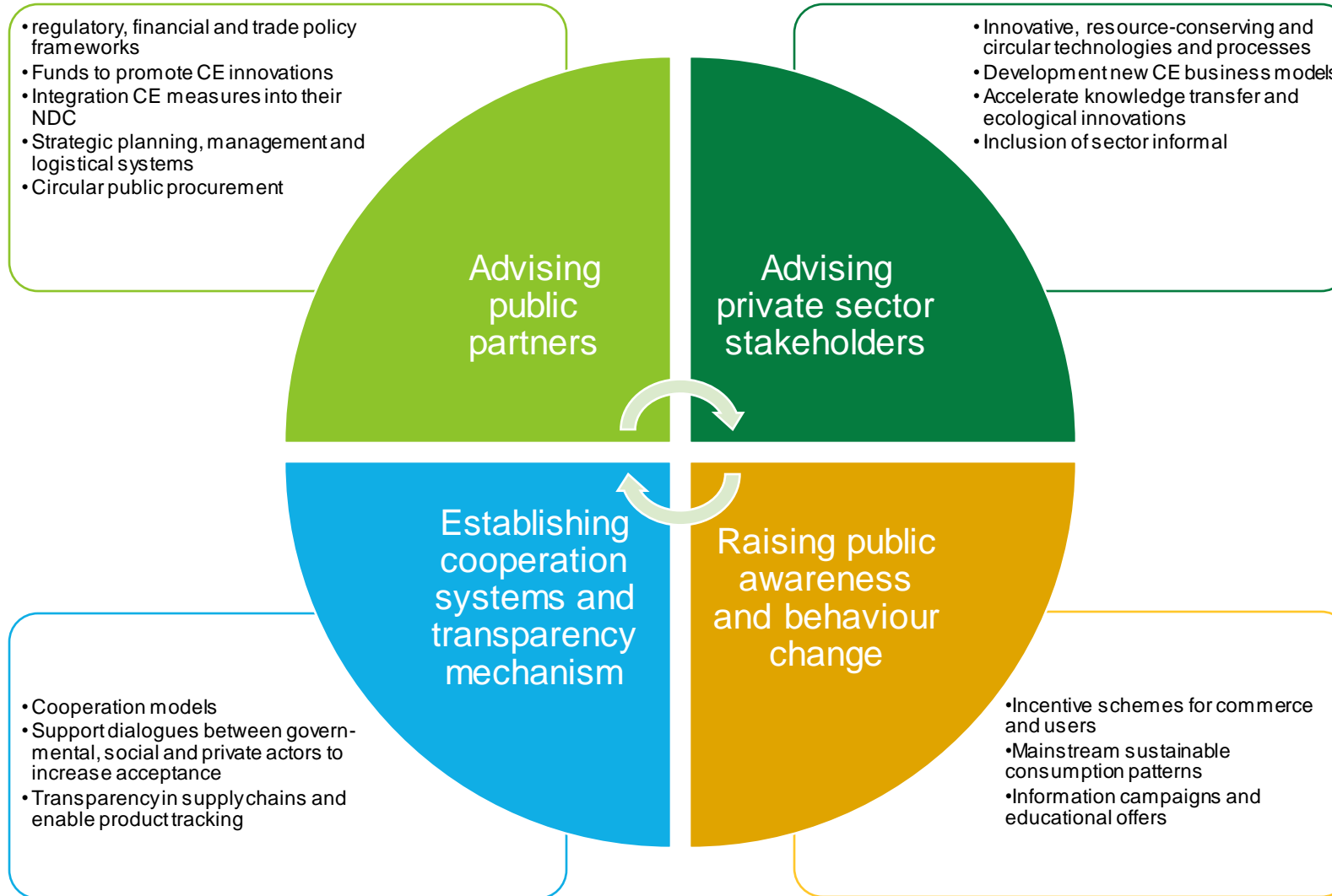


Content



- Introduction and service offer GIZ
- Quantification tools
- Circular solutions
- Experienced Business models
- Additional information

Service offer GIZ



Quantification tools

- Waste Flow Diagramm (WFD)

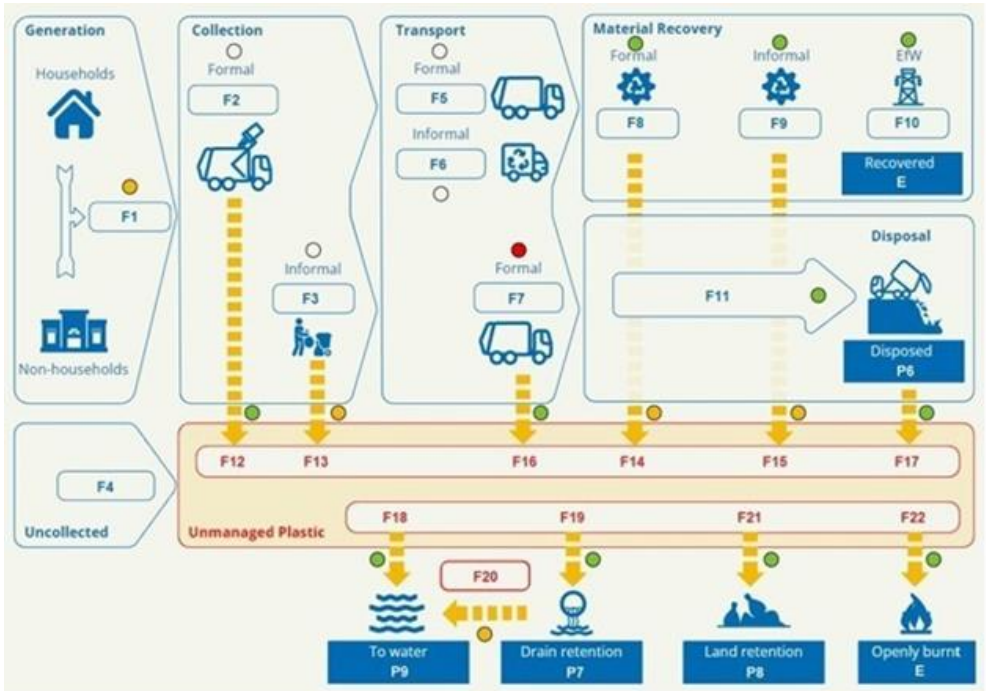


Figure: WFD System Map for Municipal Solid Waste and Plastic Flows

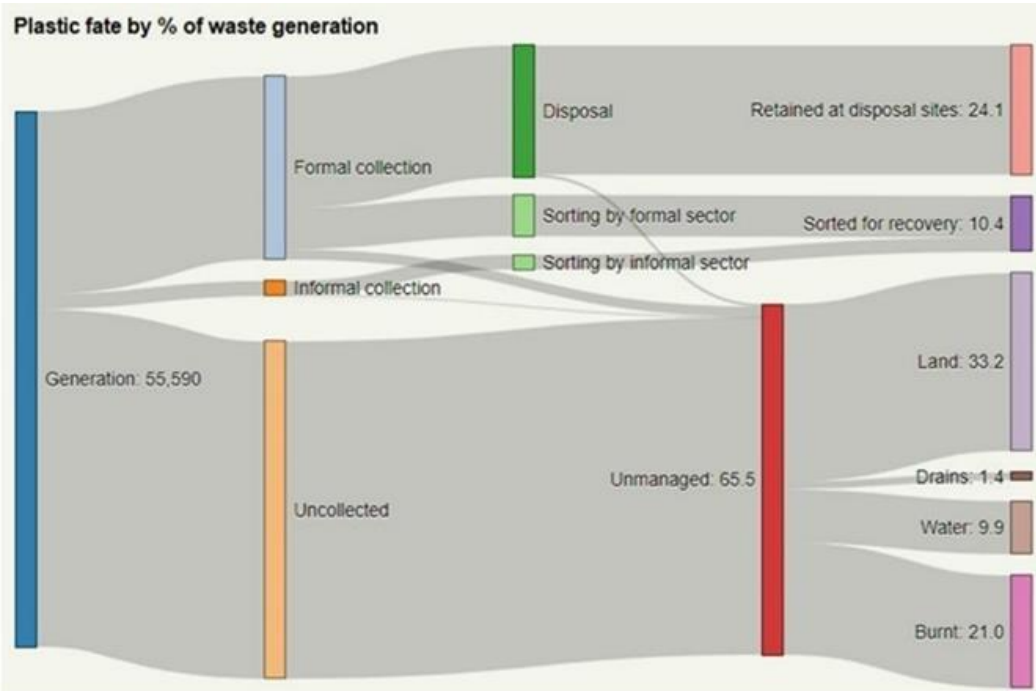


Figure: Standardised Sankey Diagram

Quantification tools – Environmental impacts



SWM-GHG Calculator (2023) – Life Cycle Assessment approach



Tool for calculating Greenhouse Gases (GHG) in Solid Waste Management (SWM)

Sponsored and financed by



Developed by



SUP – LCA Calculator



Environmental Impact Categories:

- Climate change (GHG)
- Energy demand
- Water related impacts

Circular Solution Finder



		Solutions Finder Select your topic 			
		PLASTICS/PACKAGING 	E-WASTE 	ORGANICS 	GENERAL
	Funding Gap	<ul style="list-style-type: none"> → EPR/Global Action Partnership for EPR → Transition Financing: Plastic Credits 	<ul style="list-style-type: none"> → Transition Financing: E-Waste Compensation 		<ul style="list-style-type: none"> → Study: Financing the Circular Economy
Data Gap	Data Gap	<ul style="list-style-type: none"> → Waste Flow Diagram → Corporate Plastic Waste Disclosure → Life Cycle Assessments of Single-Use Plastic Alternatives 		<ul style="list-style-type: none"> → GHG Calculator 	
Behaviour Gap	Capacity/Awareness Gap	<ul style="list-style-type: none"> → Behaviour-Centred Design → Learnings from Awareness Raising Projects → Building Capacities at the Organisational and Business Level 	<ul style="list-style-type: none"> → Behaviour-Centred Design → E-Waste Academy for Managers → Trainings on E-Waste Plastics and Battery Recycling 	<ul style="list-style-type: none"> → Behaviour-Centred Design 	<ul style="list-style-type: none"> → Building Capacities at the Academic Level
Techn. Gap Upstream	Technical Gap: Upstream Solutions	<ul style="list-style-type: none"> → Circular and Sustainable Packaging Design → Promoting Reuse Models and Alternative Materials 	<ul style="list-style-type: none"> → Reuse, Repair and Refurbishment of Electrical and Electronic Equipment 	<ul style="list-style-type: none"> → Circular Economy & Climate: CE-smart NDCs 	
Techn. Gap Downstream	Technical Gap: Downstream Solutions	<ul style="list-style-type: none"> → Plastic Waste Collection → Strengthening Informal Waste Workers → Reducing Marine Litter → Waste-to-Energy Options and Co-Processing 	<ul style="list-style-type: none"> → Treatment Solutions and Innovative Finance Models for Problematic E-Waste Fractions → Improving the PIC Procedure for Transboundary E-Waste Movement 	<ul style="list-style-type: none"> → Guideline for Organic Waste Treatment in East Africa 	<ul style="list-style-type: none"> → Digital Tools to Support Circular Solutions
Colaboration Gap	Collaboration Gap	<ul style="list-style-type: none"> → Plastics Working Group 	<ul style="list-style-type: none"> → E-Waste Working Group (with StEP) 	<ul style="list-style-type: none"> → Organic Waste Working Group 	<ul style="list-style-type: none"> → PREVENT Waste Alliance as a Multi-Stakeholder-Partnership

04

Experienced business models



Business models

Categories



Plastic and packaging

Less Plastic Guide – tourism



E-Waste



Organic



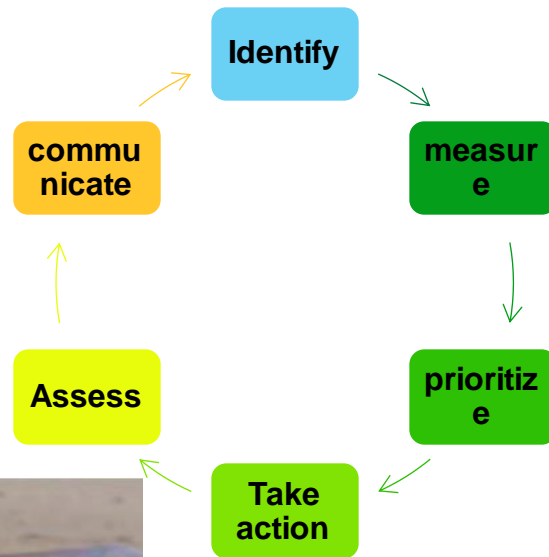
General



Business models

Plastic and packaging

Less Plastic Guide – tourism



Vytal – reusable system

- Online platform based reverse logistic system to reduce plastic waste in public and enterprises Col and DR.
- Multi use containers for food and beverages for free (in registered shops).



Business models

E-Waste

giz



- Refurbishment electric vehicle batteries in converting in stationary energy back up in Colombia.
- Include reverse logistic programs to 15/32 states.
- Dx batteries: second life or recovery.
- Implementation of battery management systems to decentralized solar energy systems.



- Remanufacture “pre-loved” IT equipment.
- E-waste collection and evaluation:
 - Adaptation and integration in robotic building kits for kids
 - Repair of IT equipment and sold to Brand
- New jobs creation.
- Access to technology through an affordable warranted option.



Business Plan Calculation Tool

Business models

General



- connect global corporate finance with ambitious and scalable local projects to support and accelerate circular waste management action.
- better access to a variety of flexible financial solution.
- facilitate partnerships and intersectoral cooperation.
- provide more data about informal regional WM and recycling potential.

- world's first multi-material global waste management app.
- free app brings together solid waste producers, collectors and recyclers.
- download for free and start trading recyclable materials today.
- enabled for all countries
- offered languages: Arabic, Bahasa, English, Portuguese, Spanish & Vietnamese.

Contact Details

Torsten Lingner

Planning Officer

Deutsche Gesellschaft für
Internationale Zusammenarbeit
(GIZ) GmbH - GIZ

torsten.lingner@giz.de